

PALIMPSEST

// Marty Hirst

Palimpsest: a parchment reused or altered but still bearing visible traces of its earlier form.

The works in this exhibition first exist as a digital photograph shot by the artist. Each image is then manipulated through several Photoshop layers, creating a palimpsest that abstracts and shifts the pictorial narrative. Viewers are encouraged to find their own story in the completed canvas.

Marty Hirst is an artist and writer living in Banyule/Naarm, spiritual home to Australia's late Nineteenth Century impressionists. These palimpsest prints capture this impressionist spirit.

Marty's practice is a montage of photography, painting and print-making. Following the footsteps of Australia's impressionist masters, Marty is inspired by the reach of the Birrarung/Yarra that flows by the feet of the Heidelberg hills.

To order prints:

The images are displayed here unframed. Framing is available in a range of colours: Black matte, White, Vintage Silver, Walnut (dark wood) or Oak (light wood). The frames form a shadow mount that creates a small gap between the inside edge of the frame and the outer edge of the canvas so the image appears to be floating.

Prints can be ordered by calling or emailing Marty, price includes local delivery with a short drive of the theatre, delivery to other areas can be arranged (POA). Sizes can be varied within reason, and at the artist's discretion (POA).

Marty Hirst Phone / WhatsApp: (+61) 0400 975 256 or email: ethicalmartini@gmail.com

Images are displayed on Marty's website. Google "Marty Hirst artist" / martyhirstart.net.au

PALIMPSEST / CATALOGUE / PRICE LIST

ITEM	TITLE	DESCRIPTION	UNFRAMED	FRAMED
	Banyule House 60*80 cm	Banyule House from the wetlands looking north. I often walk here and rest on the benches installed at the spot where this photo was taken.	\$225	\$295 (walnut recommended)
	Roosting Pelicans 60*60 cm	Pelicans roost on these boat moorings in Tuggerah Lake. You can see them in other photos from the Long Jetty series.	\$225	\$295 (walnut or black recommended)



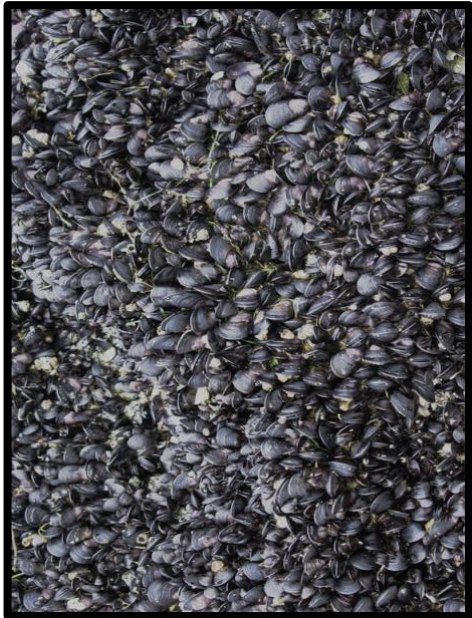
Footsteps on
Squeaky
Beach
60*60 cm

Squeaky Beach, on
Wilson's Promontory, has
some of Australia's
finest sand.

\$185

\$250 (silver
recommended)

Squeaky Beach has a
long gentle slope and
looks directly into
Bass Strait



Mussels on
Squeaky
Beach
80*60 cm

Mussels live in tightly-
packed colonies along
rock formations that
become exposed at low
tide.

\$225

\$295 (black
or silver
recommended)

I hang this in portrait
but it works just as
well in landscape,
please specify when
ordering.

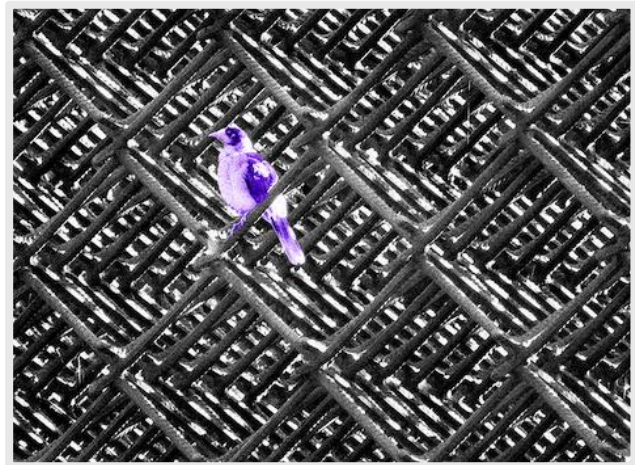


Spinebill on
Callistemon
60*80 cm

The Spinebill sat still
long enough for me to
grab this picture,
Yanakie, Vic.

\$225

\$295 (oak or
walnut
recommended)



Theoretical
Matter
60*80 cm

Yes, this Noisy Miner
posed for this shot
while perched on Neil
Taylor's famous
'Theoretical Matter' in
the Heidi sculpture
park.

\$225

\$295 (silver
or black
recommended)



Cormorant
Take-Off
50*75 cm

I had about an hour of
sunlight after a day of
rain.

\$185

\$250 (oak
recommended)

The birds of Long Jetty
were very obliging.



Long Jetty
at close of
day
60*80 cm

This long jetty juts out
into Tuggerah Lake. \$225

\$295 (walnut
recommended)

It was one of my
father's favourite
spots.



Ibis
Formation
(blue form)
50*75 cm

The Sacred Ibis is often referred to as a 'Bin Chicken' but they are majestic in flight. \$185

\$250 (oak recommended)



Gull Mirror
60*60 cm

The golden hour at sunset is a photographer's playground. \$185

\$250 (black recommended)



Gull
Formation
50*75 cm

As the rain lifted, a gentle haze muffled the horizon, but the gulls didn't mind.

\$185

\$250 (silver recommended)

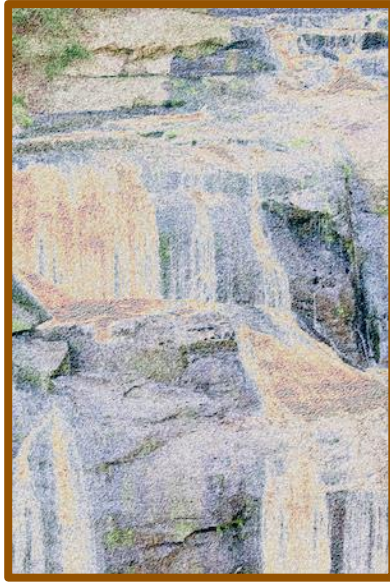


Squeaky
Beach
Reflections
60*80 cm

A lone figure sits in the silence of an empty vista

\$225

\$295 (silver recommended)



Waterfall,
Beechworth
Gorge

75*50 cm

After heavy rain this
waterfall comes to life.

My idea here was to make
this image as abstract
as possible while
retaining the integrity
of the underlying
photograph.

\$185

\$250 (walnut
recommended)



Gulls on the
boat ramp

50*75 cm

Gulls roosting with the
pelicans and a cormorant
drying its wings.

Available on request
(not exhibited)

\$185

\$250 (silver
recommended)



Eastern
Grey,
Banyule
Wetlands

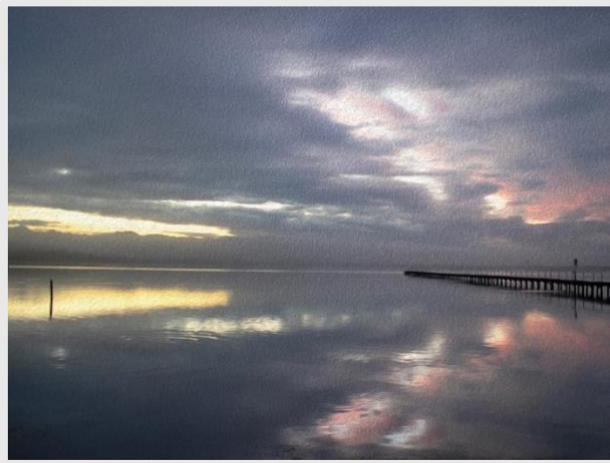
50*75 cm

The mob that lives in
the wetlands always
brings me to a happy
place.

Available on request
(not exhibited)

\$185

\$250 (walnut
recommended)



Long Jetty
Reflections

60*80 cm

As it got closer to
sunset, the sky rewarded
my patience.

Available on request
(not exhibited)

\$225

\$295 (silver
recommended)



Long Jetty
Clouds
Lifting
60*80 cm

A fierce narrow band of
sun put the day to bed.
Available on request
(not exhibited)

\$225

\$295 (walnut
recommended)



Ibis
Formation
(gold form)
50*75 cm

Sacred Ibis are a very
under-rated bird.
Available on request
(not exhibited)

\$185

\$250 (oak
recommended)



Lifting
Gulls
50 * 75 cm

This is a tight crop. In \$185
the original image seven
seagulls lifted in
unison.

\$250 (black
recommended)

I am happy to discuss
variations on this
image. Available on
request (not exhibited)